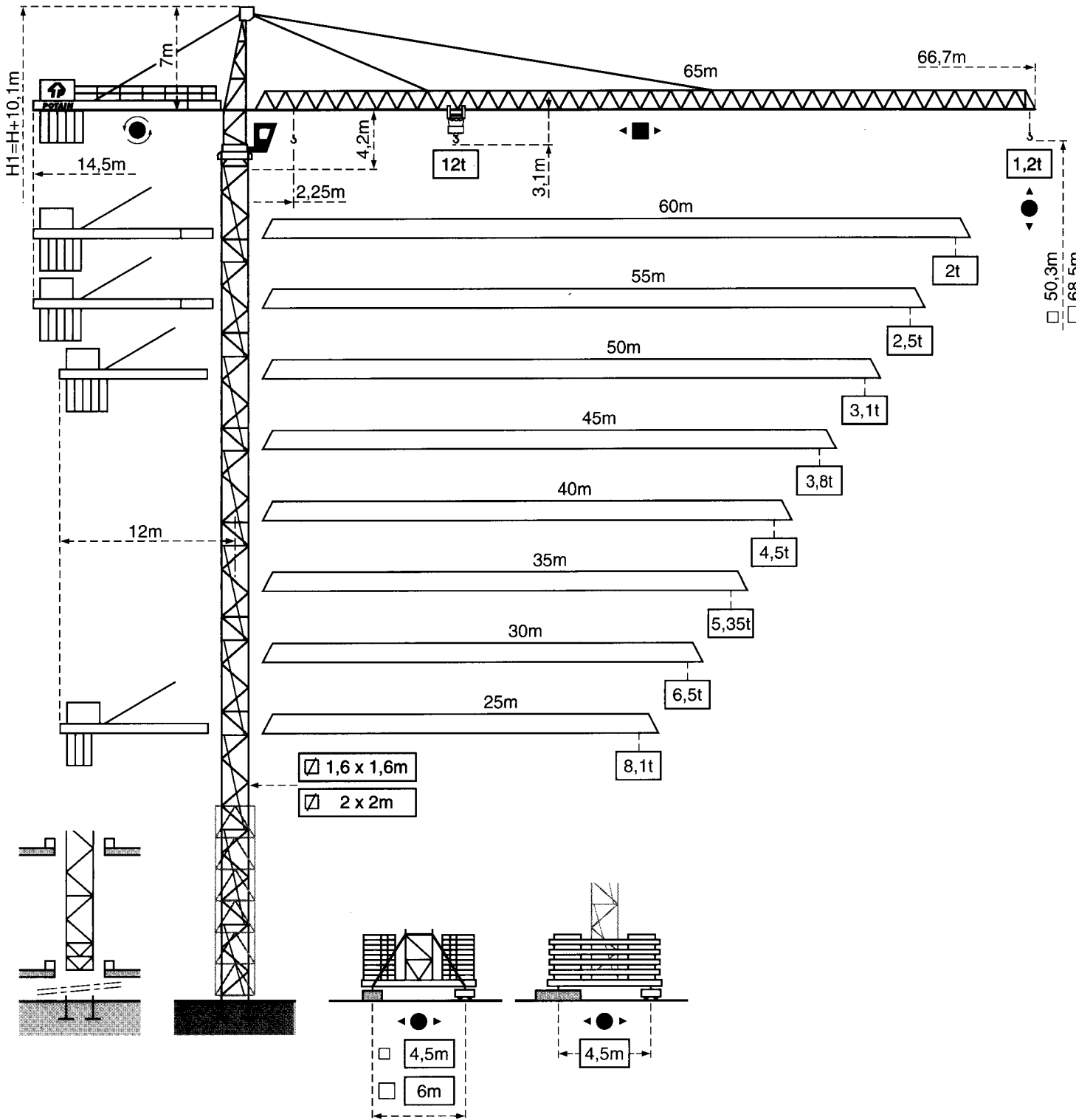


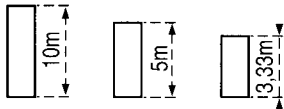
**TOPKIT MD 220
"matic"**



TOPKIT MD 220 "matic"

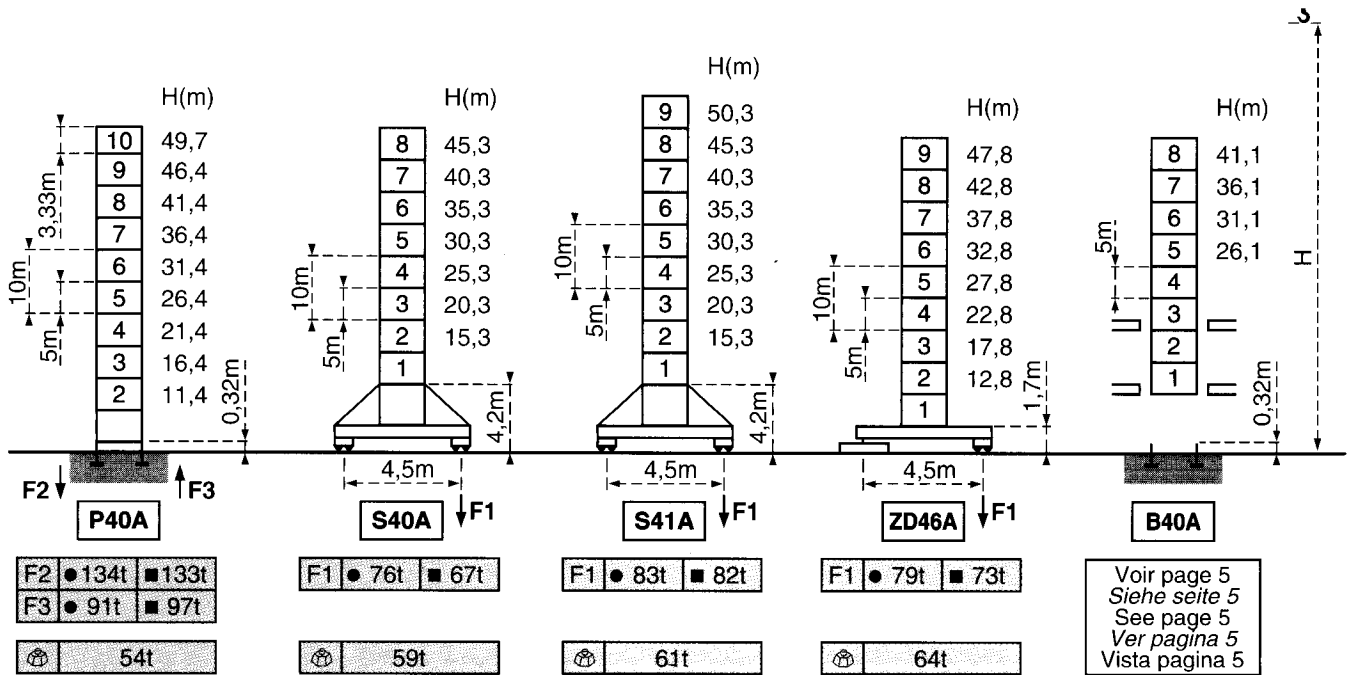
POTAIN  [®]

Mats - Maste - Masts - Mástil - Torre

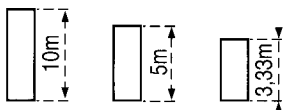


∅ 1,6m
MD 220 G12

**Flèche - Ausleger - Jib
Flecha - Braccio
25m → 55m**

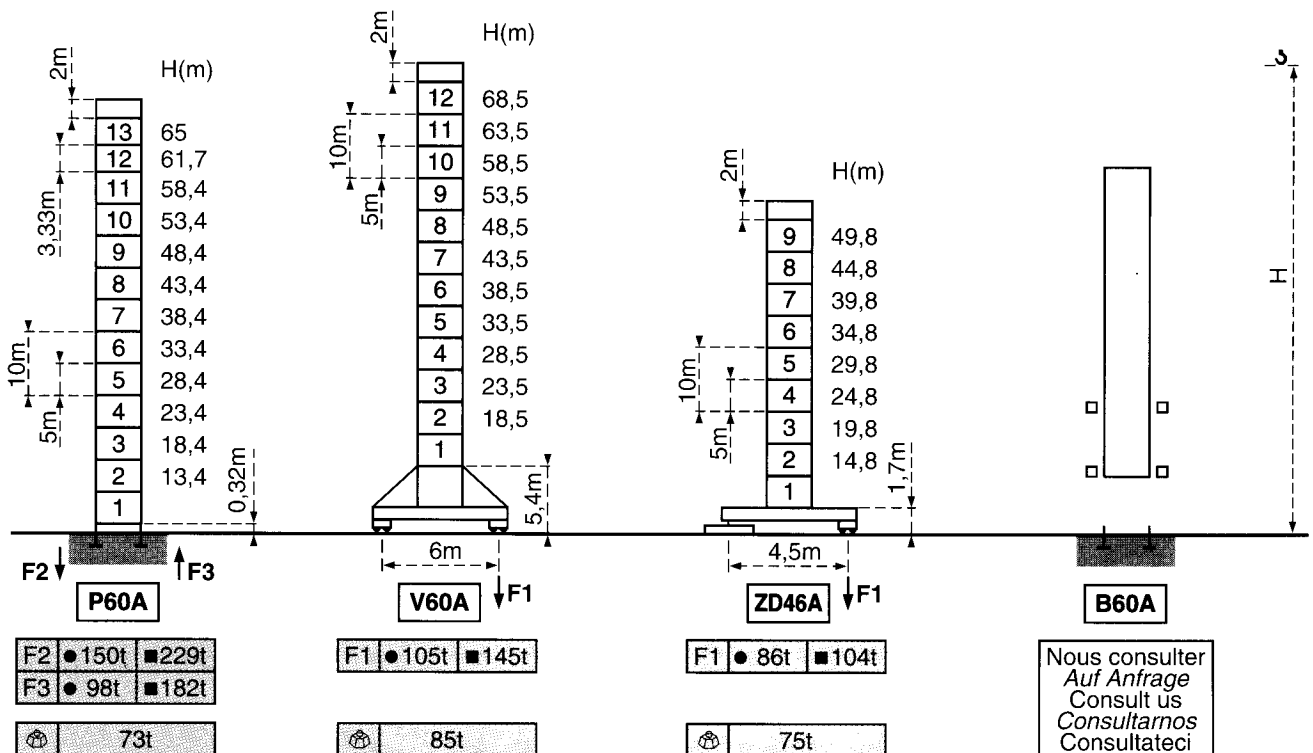


Mats - Maste - Masts - Mástil - Torre



∅ 2 m
MD 220 J12

**Flèche - Ausleger - Jib
Flecha - Braccio
25m → 65m**

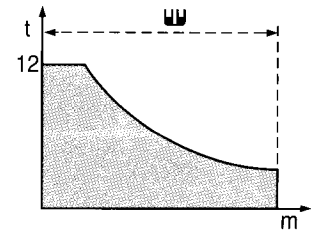


F = Réactions - Eckdrücke - Reactions - Reacciones - Reazioni

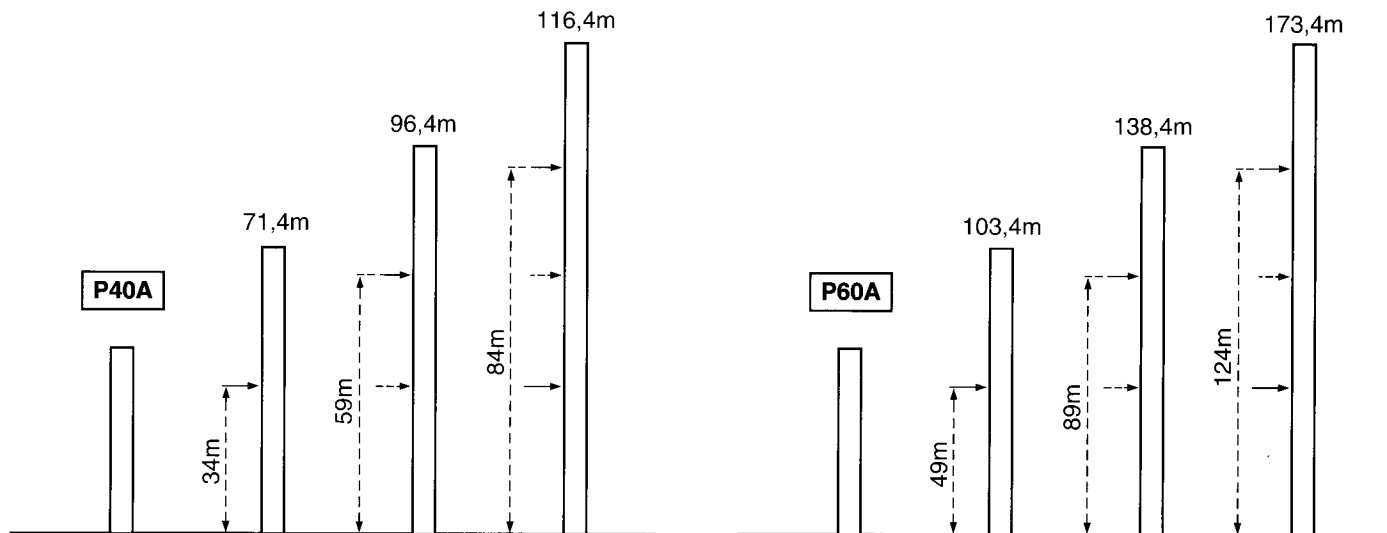
Flèche
Ausleger
Jib
Flecha
Braccio

Courbes de charges - Lastkurven - Load diagrams - Curvas de cargas - Curve di carico

	13,3	15	17	20	22	25	27	30	32	35	37	40	42	45	47	50	52	55	57	60	62	65	m
65m	12	10,4	9	7,4	6,5	5,6	5	4,4	4	3,5	3,2	2,88	2,67	2,39	2,22	2	1,87	1,68	1,57	1,42	1,33	1,2	t
	15,5	17	20	22	25	27	30	32	35	37	40	42	45	47	50	52	55	57	60				m
60m	12	10,8	8,9	8	6,8	6,2	5,4	5	4,4	4,1	3,7	3,5	3,1	2,94	2,67	2,52	2,30	2,17	2				t
	16,3	20	22	25	27	30	32	35	37	40	42	45	47	50	52	55						m	
55m	12	9,5	8,5	7,2	6,6	5,8	5,3	4,7	4,4	4	3,7	3,4	3,2	2,89	2,72	2,5							t
	17,1	20	22	25	27	30	32	35	37	40	42	45	47	50								m	
50m	12	10	8,9	7,7	7	6,1	5,7	5	4,7	4,2	4	3,6	3,4	3,1								t	
	17,7	20	22	25	27	30	32	35	37	40	42	45										m	
45m	12	10,5	9,3	8	7,3	6,4	5,9	5,3	4,9	4,5	4,2	3,8											t
	17,8	20	22	25	27	30	32	35	37	40												m	
40m	12	10,5	9,4	8,1	7,4	6,5	6	5,4	5	4,5												t	
	17,8	20	22	25	27	30	32	35														m	
35m	12	10,5	9,4	8,1	7,4	6,5	6	5,35															t
	17,8	20	22	25	27	30																m	
30m	12	10,5	9,4	8,1	7,4	6,5																t	
	17,9	20	22	25																		m	
25m	12	10,6	9,4	8,1																			t



Ancrages - Verankerungen - Anchorages - Anclaje - Ancoraggio



■ En service
● Hors service

■ In Betrieb
● Ausser Betrieb

■ In service
● Out of service

■ En servicio
● Fuera de servicio

■ In servizio
● Fuori servizio

⊗ A vide sans lest
avec flèche et hauteur
maximum.

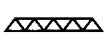

⊗ Ohne Last und Ballast
mit Maximalausleger und
Maximalhöhe.

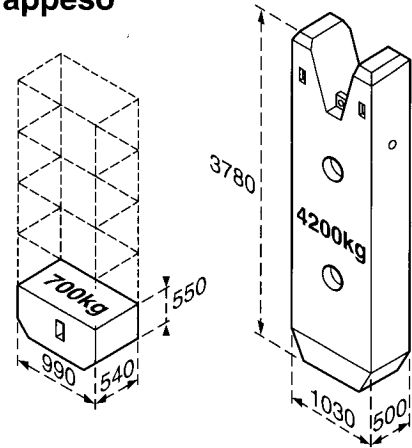
⊗ Without load and
ballast with longest jib
and maximum height.

⊗ Sin carga, sin
lastre con flecha y
altura máximas.

⊗ A vuoto senza zavorra
e con braccio massimo e
altezza massima.

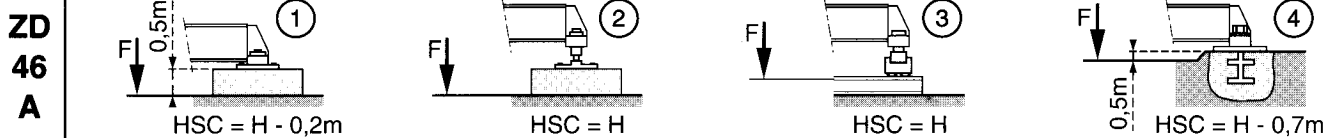
Lest de contre-flèche - Gegenauslegerballast - Counter-jib ballast
Lastre de contra flecha - Contrappeso

			(kg)
A	65m	14,5m	21 000 = (5x4200)
	60m	14,5m	20 300 = (4x4200)+(5x700)
	55m	14,5m	18 900 = (4x4200)+(3x700)
	50m	12m	23 100 = (5x4200)+(3x700)
	45m	12m	20 300 = (4x4200)+(5x700)
	40m	12m	18 200 = (4x4200)+(2x700)
B	35m	12m	15 400 = (3x4200)+(4x700)
	30m	12m	13 300 = (3x4200)+(1x700)
	25m	12m	10 500 = (2x4200)+(3x700)



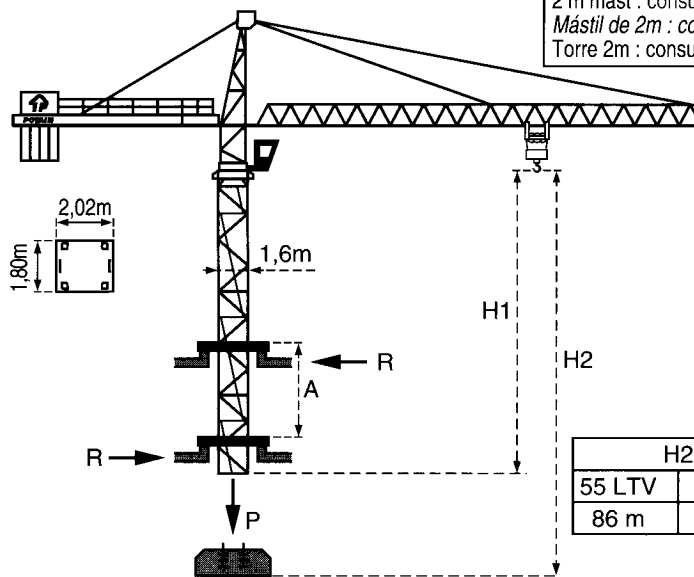
Lest de base - Grundballast - Base ballast - Lastre de base - Zavorra di base

H(m)	A	B	H(m)	A	B	H(m)	A	B	H(m)	A	B	H(m)	A	B
									68,5	120t	120t			
									63,5	84t	96t			
									58,5	60t	72t			
			50,3	60t	66t	47,8	50t	60t	53,5	48t	48t	49,8	65t	65t
45,3	60t	66t	45,3	60t	66t	42,8	50t	60t	48,5	24t	36t	44,8	55t	55t
40,3	60t	66t	40,3	60t	66t	37,8	50t	60t	43,5	24t	36t	39,8	55t	55t
35,3	60t	66t	35,3	60t	66t	32,8	50t	60t	38,5	24t	36t	34,8	55t	55t
30,3	60t	66t	30,3	60t	66t	27,8	50t	60t	33,5	24t	36t	29,8	55t	55t
25,3	60t	66t	25,3	60t	66t	22,8	50t	60t	28,5	24t	24t	24,8	55t	55t
20,3	60t	66t	20,3	60t	66t	17,8	50t	60t	23,5	24t	24t	19,8	55t	55t
15,3	60t	66t	15,3	60t	66t	12,8	50t	60t	18,5	24t	24t	14,8	55t	55t
S 40 A ◀●▶			S 41 A ◀●▶			ZD 46 A ◀●▶			V 60 A ◀●▶			ZD 46 A ◀●▶		
□ 1,6m						□ 2m								



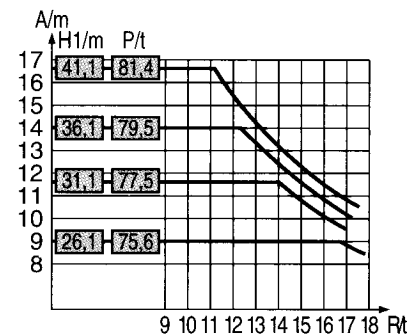
Télescopage sur dalles - Kletterkrane im Gebäude - Climbing crane
Telescopage gruas trepadoras - Gru in cavedio

Mât de 2m : nous consulter
 Mast von 2m : Auf Anfrage
 2 m mast : consult us
 Mástil de 2m : consultamos
 Torre 2m : consultateci




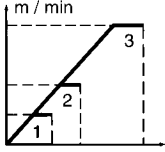

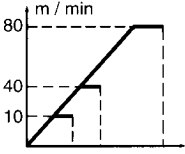

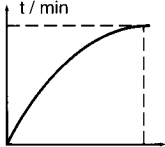






H2	
55 LTV	80 LTV
86 m	150 m

B 40 A



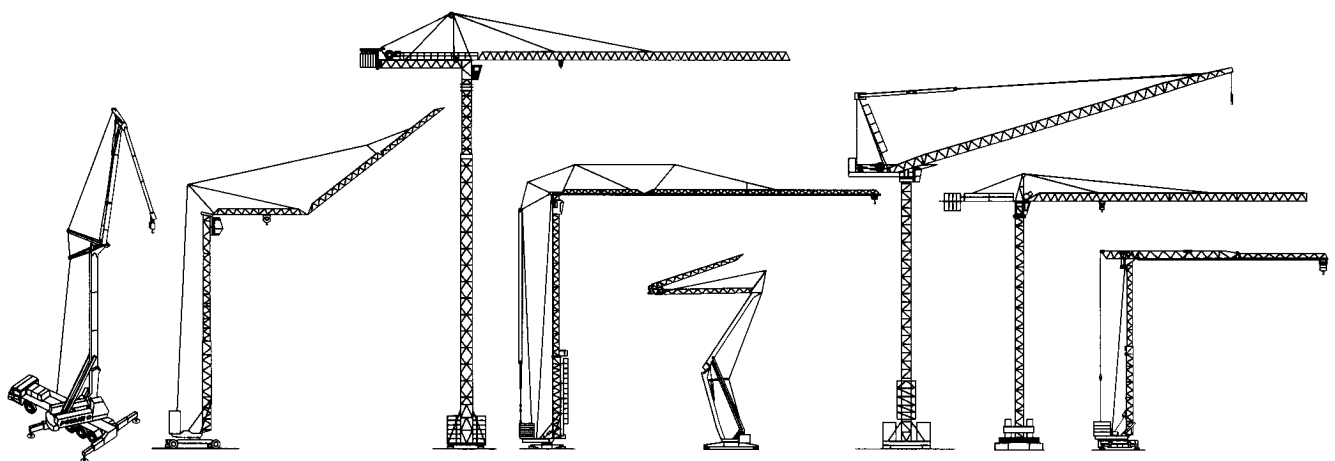
- | | | | | |
|---------------------------------|-------------------------------|-----------------------------|---------------------------------|--------------------------------|
| A Distance entre cadres | A Abstand zwischen den Rahmen | A Distance between collars | A Distancia entra marcos | A Distanza fra i telai |
| H1 Hauteur grue | H1 Kranhöhe | H1 Crane height | H1 Altura grúa | H1 Altezza gru |
| P Poids de la grue (en service) | P Krangewicht (in Betrieb) | P Crane weight (in service) | P Peso de la grúa (en servicio) | P Peso della gru (in servizio) |
| R Réaction horizontale | R Horizontalkräfte | R Horizontal reaction | R Reaccion horizontal | R Reazione orizzontale |

Mécanismes - Antriebe - Mechanisms - Mecanismos - Meccanismi

				m/min	t		ch -PS hp	kW	
Levage Heben Hoisting Elevación Sollevamento		 12t	55	1	0 → 16	12	344m	55	40,5
			LTV	2	32	6			
			30	3	64	3			
			80	1	0 → 24	12	601m	80	60
			LTV	2	48	6			
			30	3	96	3			
Ditribution Katzfahren Trolleying Distribución Ditribuzione			6 D3 V4		10-40-80		6	4,4	
Orientation Schwenken Slewing Orientación Rotazione			RCV 185		0 → 0,8 tr/min rpm		2x9	2x6,6	
Translation Kranfahren Travelling Traslación Traslazione	 1,6 m	 S 40 A R ≥ 10m	RT 324	12,5 - 25			2x7	2x5,2	
		 S 41 A R ≥ 10m	TCV 449 ARC	10 - 50			4x6,8	4x5	
			RT 443 A1 2V	15 - 30			4x5	4x3,7	
		 ZD 46 A	TCV 449 ARC	10 - 50			4x6,8	4x5	
	RT 443 A1 2V		15 - 30			4x5	4x3,7		
	 V 60 A R ≥ 13m	RT 544 A1 2V	13,5 - 27			4x7	4x5,2		
		TCV 649 ARC	10 - 50			4x6,8	4x5		
	Réseau - Netzstrom - Mains supply - Red - Rete elettrica							370V-400V.50Hz	
Puissance électrique nécessaire - Anschlusswert - Necessary electric power Potencia eléctrica necesaria - Potenza elettrica necessaria							55 LTV : 80KVA 80 LTV : 105KVA		
Groupe électrogène - Stromaggregat - Generator set - Grupo electrogeno - Gruppo elettrogeno							*		

*Nous consulter - Auf Anfrage - Consult us - Consultamos-Consultateci

Conforme à la directive CEE 84/534 sur le niveau acoustique - Gemäss EWG-Richtlinie 84/534 Schall- Leistungspegel
 In compliance with the EEC 84/534 Instruction on noise level - Conforme con la direttiva CEE 84/534 sobre el nivel acustico
 Conforme colla direttiva CEE 84/534 sul livello acustico



Document pour usage commercial uniquement - *Benutzung dieser Unterlagen nur für Verkaufszwecke* - Document for commercial use only -
Documento para uso comercial unicamente - Documento per uso commerciale solamente

Copyright.Reproduction interdite © POTAIN 1992

POTAIN 

GROUPE LEGRIS INDUSTRIES

18.Rue de Charbonnières, B.P. 173-F 69132 ECULLY Cedex
 Tél. 72.20.20.20 - Télex 375 213 - Fax 72.20.20.00

POTAIN GmbH	Deutschland	Tel : 06.105.704.0
POTAIN U.K.	Great Britain	Tel : 0895.44.52.61
Simma POTAIN	Italia	Tel : 02.97.96.71
POTAIN Portugal	Portugal	Tel : 02.968.08.89

TOPKIT MD 220 "matic"

Réf. 1992.02 LEA 2

Modifiche riservate

Modificaciones reservadas

Subject to modification.

Änderungen vorbehalten

Modifications réservées

Printed in France

Réalisation SODIPE